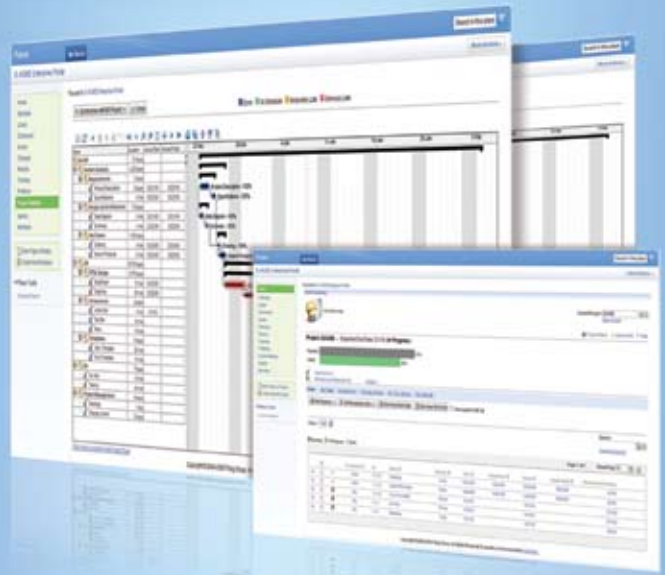




ProjExec®

Project Management 2.0 For IBM® Lotus® Collaborative Platforms



Social Project Management: The Shift from Traditional PPM

Traditional project portfolio management - characterized by top-down mandates and project managers struggling to control schedules and budgets - is obsolete.

The discipline of project management is inherently social. Web 2.0 is transforming the way businesses connect, collaborate and innovate using new tools like web services, blogs, wikis, and social networking. Project Management 2.0 is social project management enabled by Web 2.0 technologies, collaboration and social software.

Project Management 2.0 is a shift from traditional PPM that fosters dynamic project organizations where innovation from the bottom-up is balanced with leadership from the top-down to create agile teams that are responsive to change.

Leverage the IBM Lotus Portfolio

Winner of the 2010 Best Total Lotus Collaboration Solution, ProjExec® is the original Project Management 2.0 solution for the IBM Lotus portfolio. ProjExec leverages IBM Lotus collaboration, portal and social software and Web 2.0 technologies to deliver next generation social project management for IBM Lotus customers.

ProjExec is the only solution that enables Project Management 2.0 to streamline project execution using IBM Lotus collaboration, portal and social software without changing the way IBM Lotus customers collaborate today. Unlike other solutions built on proprietary collaboration and social environments, ProjExec offers Project Management 2.0 integrated with IBM Lotus enterprise-class collaboration, portal and social software.



Empowering Project Managers

Project Management 2.0 is a shift that turns project managers from administrators into leaders while opening project participation to all stakeholders and team members.

ProjExec lets project managers continue to use their favorite project management tools while project team members become active project participants using IBM Lotus collaboration, portal and social software. ProjExec works with most popular project management tools enabled by Trilog's innovative bi-directional connector for Microsoft Project that transforms static project plans into integrated project activities shared with the entire project team. ProjExec works with other popular project management tools including Primavera, open-source OpenProj and more generally any PM tool that supports MPP, MPX or MSXML project schedule file formats.

ProjExec is Project Management 2.0 with the functional equivalent of Microsoft Project Server and SharePoint to Quickr at a fraction of the cost. ProjExec allows IBM Lotus customers to operate a single collaborative infrastructure for cost savings and improved productivity.

Projects on the Go!

Project Management 2.0 means project participants can share information, collaborate and contribute without stepping out of their existing collaborative space. ProjExec exemplifies this concept by leveraging cutting-edge Web 2.0 features in IBM Lotus Notes and Domino, IBM Lotus Quickr services for Domino, Sametime and Connections. ProjExec is available for IBM Lotus Quickr services for WebSphere Portal or native WebSphere Portal, making the solution pervasive across the IBM Lotus Portfolio and giving customers the deployment option of their choice.

Project team members can collaborate with their project peers and stakeholders across the enterprise social network using a variety of tools and mobile devices including:

- Lotus Notes sidebar
- Sametime
- iPhone
- Blackberry

For more information

To learn more about Project Management 2.0 and ProjExec, please visit www.triloggroup.com

Call (800) 818-2199 or contact:
sales@triloggroup.com

